

Welcome to

Amber's Bell Tent Camping

at

Hoveton Estate & BeWILDerwood

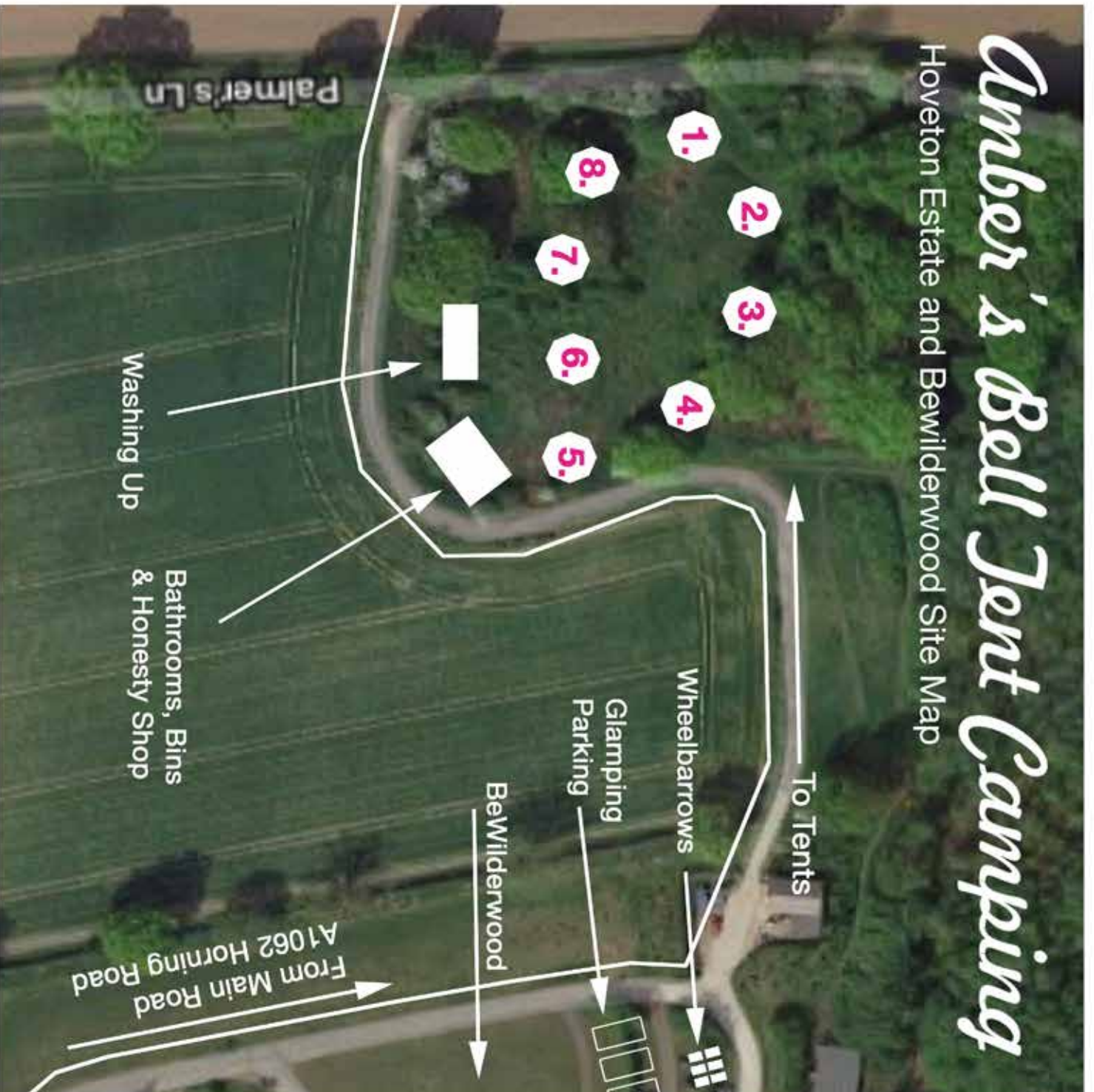
We hope you enjoy your stay!



Tent Key

1. Vole
2. Hare
3. Badger
4. Stoat
5. Weasel
6. Fox
7. Rabbit
8. Dormouse

If you arrive for your stay and we've been called away, please make your way to your tent.... everything will be ready and waiting for you.
We'll come and make sure you've settled in when we return.



Arrival Instructions

Before you set off, please make a note of the name of your tent and print off the site map attached. There tends to be staff onsite during the day till 5pm, and we can't always be available to meet guests when they arrive, so please make yourselves at home; your tent will be ready and waiting for you from from 3pm on the day. There will be an intent folder full of site specific info for your stay.

Look out for the black board ABTC signs once you've turned off the main road. The car parking areas will be clearly signed. Wheel barrows can be found in the car park area for you to transport your luggage to your tent. One for each tent. There are no cars allowed on the field.

If we can't be there to greet you, we'll be over at some point to say hi and answer any additional questions you may have, but feel free to call the number at the bottom of the page if you have any difficulties or queries.

The tents are marked with little name signs on the front to help you find your way in, and are also marked on the map attached.

Keep warm - There will be basket of kindling and wood in your tent for your intent log burner. If you need more, head to the honesty shop / wood store on the field where you will find logs for burners and fire pits, charcoal for bbq's, gas for the gas stoves, candles, and everything you need to keep the home fires burning.

Check out your folder for eating out recommendations and where you can go for supplies.

Have a safe journey and we'll see you soon!

The Hoveton Estate Team :)

Bell Tent User Guide

In Tent Log Burners You will be supplied with a basket of wood to get things going. Please note, there is no guard around the log burner. If you have little ones who aren't used to being around hot stoves, maybe light it once they're in bed - the main hazard are little ones tripping in the tent and putting their hands out to stop themselves and burning their hands. Don't leave anything on the stove or leaning against it. The door of the stove can be left on the latch to create a draw on the blaze, but close the door down before you leave your tent. Please refer to the stove info sheet further down for stove lighting tips, and the safety sheet for all the risks and how to avoid them.

Fire Pit / Camp Fire Cookery If you want a camp fire or bbq, you can buy nets of logs and bags of charcoal from the wood store. Always get the charcoal white hot before putting your meat or veg on to cook. Avoid using BBQ starter if you can. If you're planning a big communal camp cook up, there are some big camp pots and extra crockery in the honesty shop. Get the chilli on! Don't forget to toast your marshmallows! There should be a jar of them in the pantry supplies in the tent on arrival.

Gas stove We no longer provide these as standard in our kitchen boxes, but now offer the purchase of them when you book. They are then yours to take away and bring back next time you come and stay! If you haven't booked a gas stove and find you need one, there will be some on site available to purchase at £15. Please use the same payment method as for the wood. If using a gas stove, please refer to the specific gas stove safety sheet below and please remember to only use this outside.

Kitchen boxes You should find everything you need for your culinary camp cookery in your kitchen boxes. Please could you make sure that all the bits end up back in the box. This is especially important if you are part of a group. There is a list of what is included below. There should be 5 of each.

In tent cooler Your vintage trunk in your tent works as a cool box. Frozen hot water bottles and cool packs live in the freezers. I'd recommend putting all your food in here to keep the local wildlife out of your tents looking for tasty treats! Please don't have more than two in your tent at one time, otherwise there may be a shortage in the freezer!

More linen Your beds will be made up with crisp cotton bedding. If you're staying for more than a few days and you'd like your beds changing mid stay, please see one of the girls on site or message me.

Lighting You will find either a solar or wind up lantern in your tent for you to use during your stay. Our lighting is pretty ambient. You may want to bring a spare torch or lamp. There are some spare torches in the honesty shop. Tea lights - not for tent use - Please only put light tea lights in the jars provided in the wood store and only on the picnic bench outside.

Keeping Dry Please zip up the tent when you leave or go out....Doors and windows. This will help avoid soggy patches when you get home. If you are camping when wet, avoid any contact with the canvas to avoid drips, and get the stove on!

Hoveton Estate Site Guide

Bathrooms and Keeping Clean

There are 3 hot water showers and 3 loos in the corner of the field. They will be cleaned daily.

Washing up - House/Tent Keeping

You're on holiday, so you shouldn't have to do any! But if you're not eating out all the time, then of course there'll be the obligatory washing up. You can either take your washing up in a wheel barrow over to the washing up area outside of the shower block, where there is hot water, or go for the traditional rustic affair of boiling a kettle and using the trug as a big washing up container outside. You can drain your water away in some long grass. You can leave your pots and pans to dry on the picnic bench. Don't forget, we supply Eco washing up liquid found both at the washing up station and the honesty shop on the field, clean sponges are provided in tents as are tea towels.

Water

You can find clean drinkable water from the washing up area at the shower block.

Wood Store / Honesty Shop

is located next to the bathrooms. Here you will find all the supplies that you may need to keep you warm and more. Kindling, firewood, gas canisters for the gas stoves, spare lanterns, tea lights. Everything is priced on the blackboard - There are books for each tent in the honesty shop where you can tally up what you use for your stay. If you could leave the cash and details of what you have purchased in an envelope in the cash tin on the wall please before you leave. Thank you.

Fire Safety

There is a fire extinguisher and a fire bucket in the wood store in the field shelter - let's hope you don't need to use them - please refer to the fire safety sheet below.

Rubbish!

There are bins near the bathrooms - The black bin is for 'landfill' rubbish, the green will recycle the following: Glass, cardboard, paper, tins, cans, plastic bottles. Could you please make sure there is no rubbish left in the bins in the tents when you leave. Ash - The fire pits and stoves are cleaned before you arrive, but if you find you need to empty either, there are ash bins for hot ashes behind the field shelter. Please refrain from tipping them into the grass.

Wildlife

Hopefully the wildlife will be something that you enjoy as part of your stay with us. Please be aware - you are in the countryside and you will be sharing your space with sheep, in the fields around the camp, foxes and deer can be heard 'barking' at night. Owl's hooting, and insects. We do our very best to make sure your tent is free of flying things before you arrive. If you want to keep it so, please keep your insect nets zipped up. We, along with the rest of the UK had wasp epidemic last year. Please keep food waste down to a minimum.

Fun Stuff

Free range your kids - They can go wild in the woodland next to the tents where they can climb the trees, and have fun swinging on the rope swings. There's a table tennis table under the oaks too for a spot of ping pong as the sun sets, and nature discovery sheets for the budding wildlife enthusiast found in the honesty shed.

Walks

There are footpaths that lead from the campsite onto the estate and beyond. You will find maps in the honesty shed highlighting these.

Cycling

You can hire bikes from Broadland Cycle Hire just a short stroll from the tents - there's an off road cycle path that takes you all the way into Hoveton and beyond this you can link to Broadland cycle paths like the Bure Valley path and Weavers way. There will be maps in the honesty shed showing on road and off road tracks.

BeWILDerwood!

Incase you hadn't noticed, you are camping near one of the top UK family attractions. This means you can stroll over and get in there early, come back to the camp for lunch and a rest, and head back out if more adventure is needed. There are cafes in the park if you'd prefer to stay there for the day - selling snacks and lunches for all ages. If it's wet, the park will still be open. In fact, a wet day has its benefits - as you may find it is really quiet - the trees offer a lot of shelter, and the slides are even faster in the damp. I would recommend packing a pair of water-proof trousers and jackets for the kids, so if it is wet, they can make the most of it, while the big people hang out under the canopies on the bean bags and sip tea.

What to bring to the tents...

The website has all the details of where to come and what to bring, but as a reminder.. All you should have to bring is a towel, and an extra torch or lantern each. The beds will be made up with sheets, pillows and double duvets on each bed, and there will be a basket of extra blankets and hot water bottles incase it's cold. There's a lantern for use inside the tent, and jam jars and tea lights provided for outside. The tents are fitted with wood burners and there's fire-wood on site, you'll have a bucket in your tent to get you started.

The kitchen boxes are really well stocked with all you need for camp fire or gas stove cooking. I've included a list below for you to check. There's firewood and charcoal and everything to keep the fire burning, and an honesty shop with fuel supplies if you run low. You have an in tent 'fridge' to keep all your perishables cool and a freezer with cool packs provided to help keep your box chilled. Please only take 2 at a time and replace the ones not being used. Outside the tent there's a six seater picnic table for each tent and fireside log seating. Bring cushions, a table cloth and camp chairs if you'd like more comfort.

There's an awning attached to your tent to park your wellies under and cook under if it's wet.

Kitchen box list

frying pan, saucepan, stock pan, colander

enamel plates and mugs and bowls for 5 people

utensils for eating and preparation including; spatula, serving spoon, wooden spoon, bottle opener, peeler, sharp knife, bread knife, chopping board

tea pot, cafetiere or coffee cup drip filter for ground coffee

pantry supplies - including vegetable oil, salt and pepper, tea bags, sugar and marshmallows for toasting on the fire

washing up trug scourer, dish cloth and tea towel

Stove Advise

In cold or windy weather there may be the chance your stove will be a bit smoky. Please follow these tips to ensure you have a snug and smoke free stay!

- The main key to these stoves is little and often. Start with fire lighters and just a few sticks of dry kindling.
- Crack the door ajar while getting going...this will give your fire a good blaze and get it hotter quicker
- Once the stove is roaring, start adding a few more sticks at a time.
- Once the fire is established you can start adding a few of the eco hot log discs.
- It's best to keep the door slightly cracked open while establishing the fire, but once it is going and nice and hot, you'll be able to close the door.
- Please always ensure the fire is attended while the door is cracked open, and that at all times nothing is placed on top or leaning against the stove (apart from the kettle of course!)
- If you do get a bit of smoke in your tent (it will happen from time to time...sorry!) open one or more of your window vents and it will soon clear.

Hopefully, if you follow these instructions, you'll have a nice toasty stay! Feel free to ask for advise!

Fire Lighting Outside

Your outside fire pit will be your best friend while you're camping....use it for cooking, toasting marshmallows, boiling the kettle or just keeping warm while you watch the stars at night.

Each fire pit has a sturdy grill with it that you can cook directly on to, or use it to put pans on your fire.

To light your fire outside, lay a small amount of dry kindling in the bottom of the pit. Place 2 or 3 firelighters on top of the kindling. Then build a small pyramid of kindling on top making sure you can still get a match to the firelighters. Light the firelighters with a match or lighter and allow the fire to take hold. Now you can add some more dry kindling to the fire.

Once your fire is going well, you can decide what your next step is...

If you are going to have a bbq with charcoal, use a stick or poker to carefully level out the burning kindling...then put your charcoal on top. You might need to add some more kindling to keep the fire burning hot while the charcoal catches fire. Once your fire is going well, you'll need to wait until the flames have died down before cooking. Place your grill over the embers and BBQ!

If you are just having a fire, then ignore the charcoal steps and just pop some small logs on once the kindling is going.

Your outside fire is suitable for burning wood you or the kids have gathered, but please only burn dead wood from the ground....please don't pull any branches from trees to burn.

Please only burn kindling and compressed hot logs in your tent's inside wood burner....wet or green wood will produce nasty smoke and will block your chimney quickly.

Amber's Bell Tent Camping

Fire Safety at ABTC

We want everyone who stays at ABTC to have a fantastic time, and to go home with great, happy memories. Fire plays a big part of the experience with the fire pit, wood burners and gas stoves....here are some do's and don'ts to make sure you know how to make the most of these facilities whilst staying safe!

In tent wood burner safety

- Always follow the lighting instructions in your Bell Tent user guide
- Only use dried, seasoned firewood in your stove. Suitable wood can be found in the honesty shop. Green or wet wood will clog the flue and lead to nasty gasses in your tent.
- Make sure that once your stove is lit, nothing is leaning against it.
- Never leave your lit stove unattended. If you have to leave the tent while it is lit, make sure the door is firmly closed and nothing is on top or leaning on it.
- Your stove will be incredibly hot when lit...if you touch it you will burn yourself.
- Never put anything on top of the stove (apart from your kettle), even if you think it is out. Residual heat can still cause fires. The picture below demonstrates what can happen when flammable objects are left on stoves....luckily no-one was hurt!
- Keep your log basket well away from the front of the stove

Other Fire Safety

- Tea lights are for use outside of tents only and in glass jars
- Cooking with your gas stove must be done outside of the tent or in the field shelter
- You can collect wood for your fire pit...but again, never leave a fire unattended
- Always follow the user instructions for using the sauna and pizza oven
- Fire extinguishers can be found in the honesty shop...we are happy to give instruction on how to use them if needed....just ask!

If you follow all of these instructions we hope that your stay will be a happy and stress free one!



Eating Out and Supplies....Hoveton Estate

Restaurants

Bure River Cottage Restaurant (Distance 0.7 miles)

Located in the picturesque village of Horning in the Norfolk Broads. The restaurant is located a short walk from the river Bure and the public moorings. Serving solely seafood on its menu, you can look to enjoy the freshest fish supplied locally from Norfolk and Suffolk. Child friendly and full licensed.

2 minutes by car, 15 minutes on foot or 4 minutes by bike.

Staithe and Willow Tearoom & Restaurant (Distance 0.8 miles)

Staithe 'n' Willow is a beautiful thatched building, beside the river Bure on the Norfolk Broads. Serving a wide variety of food, ranging from Breakfast, morning coffees, light lunches, cream teas and evening meals. The produce used is sourced locally and they also serve award winning Norfolk wine from Winbirri Wines for anyone that fancies a tippie whilst watching the sailboats glide by.

2 minutes by car, 15 minutes on foot or 4 minutes by bike.

Cafes

The River Kitchen (Distance 2 miles)

Providing a welcoming environment for you to enjoy the beautiful views of the Norfolk Broads, whilst enjoying a range of food sourced locally to ensure a high standard. Voted best Broadland Café at the 2015 Broad's Awards. Children and babies are welcome, however there are no changing facilities due to the size of the toilets.

4 minutes by car, 38 minutes on foot or 9 minutes by bike.

Garden Kitchen Café (Distance 2.6 miles)

Friendly and welcoming café to all families and four legged friends. The chefs are more than happy to cater for any dietary requirements, and they even serve always have gluten and dairy free cakes.

Voted Runner Up in the Observer Food Monthly 2017 awards for 'Best Cheap Eats'.

3 minutes by car, 43 minutes (2.2 miles) on foot or 12 minutes (2.2 miles) by bike.

Pubs

The New Inn (Distance 0.9 miles)

The pub has a warm friendly atmosphere and prides itself on serving traditional home cooked locally sourced food, high quality Cask ales and fine wines. Plenty of entertainment available also, from an amusements area for the children to air hockey and pool tables for all to enjoy. Quiz night takes place every Friday.

3 minutes by car, 18 minutes on foot or 5 minutes by bike.

Supplies

With both Hoveton (1.9 miles) and Wroxham (2.8 miles) a short distance away, you're bound to find all you require for a comfortable and enjoyable stay at Amber's Bell Tent Camping.

If you head towards Hoveton, you will find a Roys of Wroxham and Nisa Local (both 1.9 miles away; 4 minutes via car, 38 minutes on foot and 9 minutes by bike). Both stores sell a range of essential products from food to toiletries.

If you are after some locally sourced meat for your BBQ, you may want to head to Horning (0.9 miles) where you will find a wonderful little butchers called Farm Fresh Meats (0.8 miles away; 2 minutes via car, 15 minutes on foot and 4 minutes by bike).

If you happen to be in Wroxham for the day, why not pop into local butchers, Massingham Bros (2.1 miles away; 4 minutes via car, 39 minutes on foot and 10 minutes by bike).

The Norfolk Coast - which beaches for what

West Runton – Sand, rock pools, views of Cromer. Park at the cliff top car park - £2 charge. Big sandy beach. Check the tides - When the tide is out there are rock pools to explore. When it's right in you can still access the beach, but 3/4 is submerged. I'd head to the right for about half a mile and camp under the sandy cliff which the kids like to roll down.

Sheringham - A small Edwardian sea side town with plenty of beach to go around. I park at the left hand side of the town behind the steam train station. There's parking there on the front and off the side residential streets. Up the prom to the left, you'll find the life boat centre, great views of the wild north Norfolk coast beyond. The beach is pebbly, but smooth sand appears when the tide is out. Pack your water shoes. Up to the right hand side of the prom, passed the town, you'll find the funky mackerel cafe - for great sea views with a kitsch diner feel and the biggest flapjacks you'll ever see! If you're up this way, check out the pitch and put golfing just up the cliff here. The town has some good charity shops if a rummage is your thing, with some vintage shops tucked away too!

Cromer - A glorious Victorian seaside town, with a great pier and lovely sandy beach. Don't have to worry about the tide here - always plenty of sand for everyone. Cromer surf school is situated on the prom if you and yours fancy a go. Head to the rocket cafe right on the front for great views of the beach, or the No 1 fish and chips bar at the other end. If you fancy a walk, access the coastal path from here, up past the light house and over the cliffs to Overstrand.. A play in the park and ice cream on the cliff top, then back to Cromer along the beach. It's about a 2 hour round trip.

Overstrand – Old fashioned sea side loveliness, with soft sand, groins to rest your back on, and lovely views. Park in the town or at the car park on the cliff and head down.

Cley next the Sea - There's a bit of a swimming scene in Cley in the evenings. People cycle down to the pebbly beach just out of the town with beers and picnics and have a dip. A lovely grown up beach, with interesting art happenings to stumble across. Great spot for evening Mackerel fishing. The town offers some lovely shops, selling art and books, and smoked fish and some good pubs – the king's head and the Three Swallows. You can walk from the the camp if staying at Wiveton, through the town and along the marsh

Blakeney – Just a six minute walk if camping with us at Wiveton, or you can park up at the marina and at low tide the kids can play in the 'freshers' - the creeks. It's very muddy, but much fun especially if you've a dinghy to throw into the mix. Maybe take a wetsuit... You can walk to Wiveton cafe from here if you head west along the front, you'll find the footpath up to the fruit farm. Pick your own strawbs, have some afternoon tea or tapas, and wander back to Blakeney. The seal trips run from the harbour at Blakeney. Great fun. Try and find a trip that will drop you at the point for an hour or so. It's wild over there, and heavenly. You can walk to the point, but you need to take a good map and check the tides. It's a good hour there. There's maps in your pack!

Wells next the Sea - A must while you're here. It's about a 30 minute drive if staying at Mannington, and 15mins from Wiveton. It's a magnificent place, with it's HUGE beach, backed with pinewoods and beach huts. It's a splendid wilderness. The woods are just great in themselves. Like a film set. Park in the main carpark near the beach, and walk through the woods, all the way to the end till it pops you out at the Holkham end of Wells beach for a real wild treat. You can take your bikes and cycle to Holkham from here. Look out for the rope swing in the woods - you'll hear the children yelping as you approach. Wells Deli on the front in the town is a good stop for coffee cake and noodles! French's fish and chips on the quay are renowned. Or head into the centre onto the Green for the Globe and the Crown.

Weybourne – A real wild Jurassic feel here, with working boats moored up on the shingle and lots of fishing going on on the shore. You can access the coastal path from here and walk along the top of the cliffs to Sheringham. It's just over an hour's walk. If you don't fancy the walk home, you can tempt the little ones with a ride on the steam train back to Weybourne.

Morston – More marshes and harbours like Blakeney. NT carpark on the marsh. Take your wires and bacon down to one of the bridges over the freshers and try your luck. Won't take long before you get a bite.

Salthouse – An endless bank of pebbles for you to perch on. There's a carpark directly in front of the beach, so you can park up, scramble over and you're there. Look out for the vintage coffee van that parks up there. You'll find the Dun Cow on the green – a real pub with great food and the best views of the marsh there is. There's also Cookies Crab shack on the green for fresh Norfolk Seafood.

Holkham – Probably the best known beach in North Norfolk. Miles and miles of soft white sands backed with pine woods. A real spectacle in any weather. In fact, as it's not a swimming destination as the sea is often miles out, it's a good place to visit when the weather isn't at its best. Nothing can detract from the spectacular scenery. Why not take in Holkham estate while you're here – and dine at the Victoria arms.