

2024

PENTEWAN Sands

HOLIDAY PARK

Experience paradise on the Cornish coast.

With a privately owned beach and breathtaking views across one of Cornwall's most beautiful bays, it's no wonder Pentewan Sands Holiday Park is the ultimate five-star destination.



YOUR BEACHSIDE ADVENTURE AWAITS...

**Fancy the feeling of waking up
by your own private beach?
Welcome to the Pentewan
Sands experience.**



Family run and owned since 1945, we've seen generation after generation of families return to us. Whether you choose to spend your days on our private beach, exploring Cornwall or staying close by and deciding between a whole host of activities that Pentewan Sands has to offer, there's something for everyone to enjoy.

We offer a variety of accommodation options to suit your preferences and needs. If you're seeking a tent experience, wheelchair-friendly accommodation or a more luxurious beachfront stay, we have something for everyone. Plus, some of our accommodation options also include an electric vehicle charging point.

**Book your stay now and get
ready to create lasting memories
by the sea.**



Salty sea air, jaw-dropping sea views, exceptional facilities and easy access to Cornwall's rugged coast path; discover our award-winning Holiday Park amid the craggy South Cornwall coastline.

Surrounded by a backdrop of lush green countryside, golden sands and azure blue waters, switch off in one of our holiday homes or spacious pitches and wake up recharged by the sound of the ocean.



THINGS TO SEE AND DO...

Located on the beautiful South Cornish coast, you couldn't be better placed to enjoy the spoils of Cornwall.



Charlestown Harbour



Heligan Gardens

Beyond the private beach on your doorstep, our location means we are close to some amazing local beaches and great spots by the sea. Whilst you are here, don't forget to stroll the coastal path to Mevagissey and explore the quaint streets filled with historic pubs, art galleries and eateries!

Looking to explore further afield?

Staying at our award-winning park puts you near the best attractions, beaches, eateries, hidden coves and hikes. A stay wouldn't be complete without a visit to The Lost Gardens of Heligan, Charlestown or the Eden Project.



We have some unique discount codes available for our guests to some of Cornwall's top attractions.



Eden Project

Whether you're an adventure seeker, beach lover, foodie or simply want to watch the waves roll in, there is plenty to see and do for all ages.

FANTASTIC FACILITIES

From water sports and cycling to tennis and swimming, there's an array of activities waiting for you and your whole family at our award-winning park.

Indoor Swimming Pools

The Seahorse indoor pool is the perfect spot for adults and children alike. There's a lap pool for leisurely swimming, a play pool with water flumes, a whirlpool bath to relax in and even a shallow beach area, which is perfect for toddlers who are just beginning to dip their toes.

Tennis Courts

Game, set, match! Our adult and children's tennis courts are open daily from 10am and can be booked through our Reception team.

Watersports and Boat Launching

Visit our resident watersports experts, Cornwall Watersports, and enjoy a whole host of watersport activities from kayaking and windsurfing to paddleboarding, including tandem and mega paddleboards - perfect for fun family afternoons! Self-drive boats, deckchairs, parasols and wetsuits are also available to hire on the day.

We also provide a boat-launching service from mid-May to mid-September, so you can explore the coves in and around Mevagissey Bay. Please visit our friendly Reception team on the morning you'd like to launch your boat. There is a daily fee per launch, which includes retrieval.



Children's Entertainment & Arcade

We have a fantastic selection of children's entertainment on offer throughout our peak weeks (Easter, Whitsun, summer holidays and October half term), so there's plenty to keep your little ones busy. We also have a children's play area located right on the beach and an indoor arcade in The Seahorse.

Cycling

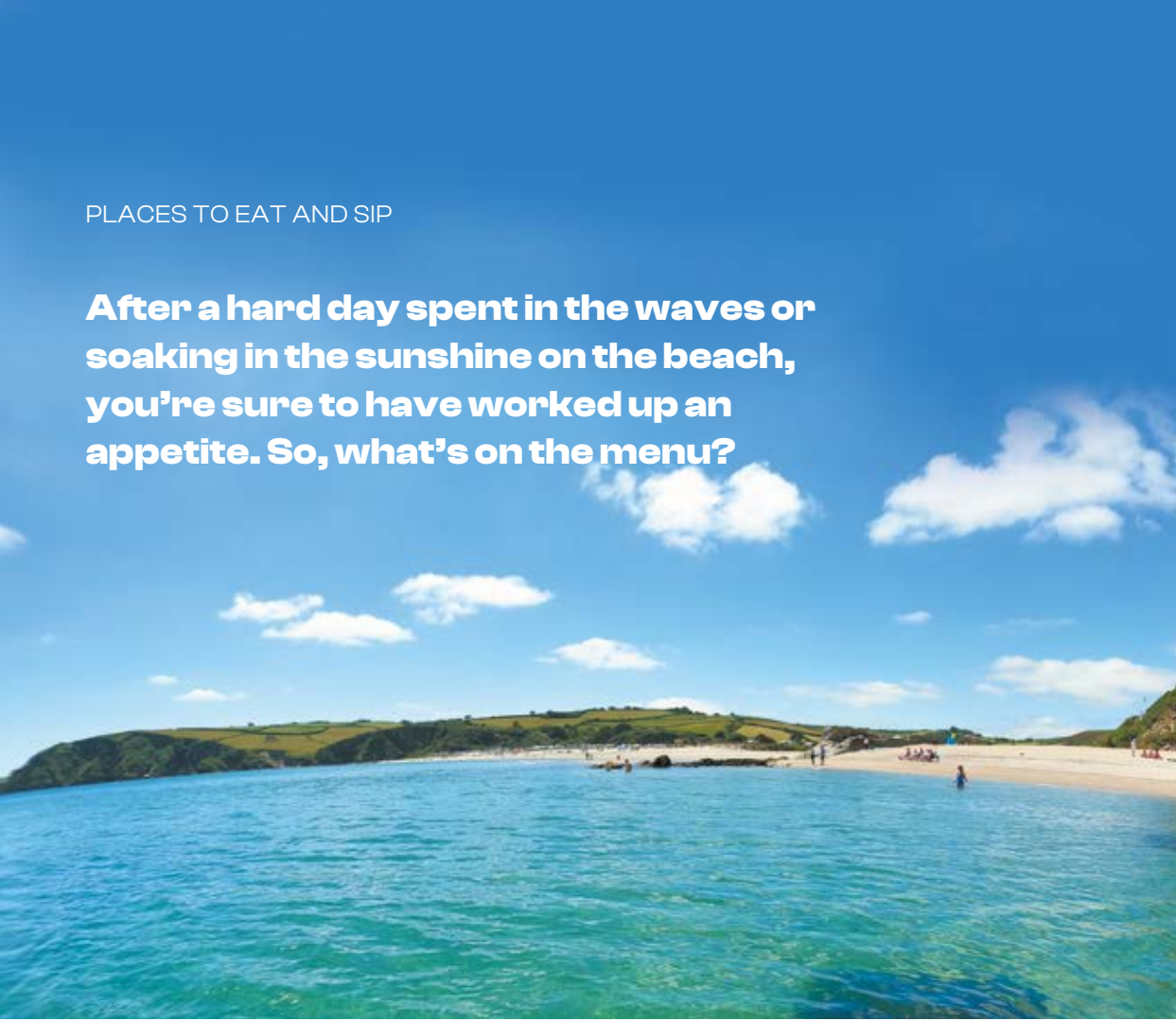
We are in a great location to access cycle-path routes to St Austell, Mevagissey and The Lost Gardens of Heligan, or if you fancy heading further afield there are plenty of other spots to visit too. Head over to our friends at Pentewan Cycle Hire to hire from their large range of quality bikes including commuter/hybrid, tandem, mountain and electric bikes.

Riveria Run

If you're visiting us during the Early May Bank Holiday you're in for a fun-packed weekend, as CMC's Riviera Run returns for their three-day Mini festival with activities suitable for all ages! Expect live music, entertainment and delicious food and drink.

PLACES TO EAT AND SIP

After a hard day spent in the waves or soaking in the sunshine on the beach, you're sure to have worked up an appetite. So, what's on the menu?



The Seahorse & Lower Deck Coffee Shop

Delightfully spacious with beautiful views across the bay, our Seahorse Restaurant is open for breakfast, lunch and dinner. Our team of chefs has curated a range of delectable dishes, from family favourites to seafood dishes and sharing small plates.

The Seahorse also boasts a selection of beverages, including a diverse range of local ales, ciders, wine and gin. Unwind indoors or on our alfresco deck and savour a perfectly poured pint whilst soaking in the sunshine.

Don't forget to visit our Lower Deck Coffee Shop for a delicious hot drink, milkshake, pastry, panini or Cornish pasty. Plus, you can ask for your hot drink to go, and enjoy a brew with a view down on the beach!

Pentewan Plaice & Hideaway Bar

Who can resist the smell of fresh, flaky fish, golden batter and crispy chips? Dine indoors or enjoy a takeaway back at your accommodation or down on the beach; after all, nothing beats the taste of fish and chips by the seaside!

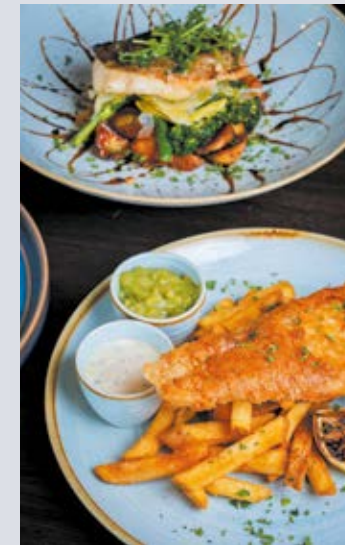
Nestled next door to Pentewan Plaice is our newly refurbished Hideaway Bar. With cosy and coastal-inspired interiors, it is the ultimate destination for watching live sports, playing pool or simply sharing drinks with friends and family.

HubBox

This beachside restaurant serves up award-winning burgers, hand-cut fries, milkshakes, tasty drinks and much more. Prime-cut or plant-based - it's all about tasty food done the right way.

Onsite Supermarket

Pop into our well-stocked supermarket and bakery for all your holiday essentials. You'll also find a wide range of souvenirs to remind you of your holiday at Pentewan Sands Holiday Park.



*Please note that during peak times, it is advisable to pre-book your table in advance. Seasonal opening times operate in our food and drink venues. Please check with Reception at the time of booking.

WAYS TO STAY

Heavenly holiday homes



Comfortable, luxurious and suitable for all budgets, our spacious two and three-bedroom holiday homes provide everything you need, making your stay a real home from home.

Positioned in various areas of the park, most offer spectacular sea views right across Mevagissey Bay. If you prefer a more peaceful spot, our Woodland Willows area is surrounded by trees and offers all the peace and seclusion you could wish for.



Take a look at the different holiday home locations using our park map, which you can find at the back of this brochure.



Every home comes with:

Bed linen, including pillows and pillowcases

Kitchen utensils

Fridge/freezer, microwave, kettle and toaster

Integrated oven, grill and hob

Digital TV and DVD player

Electric/gas fire

Unlimited hot water and heating (majority with full central heating)

Optional extras

Wi-Fi in your holiday home (free Wi-Fi is available in The Seahorse and the HubBox). Every effort has been made to provide a full Wi-Fi service across the site; however, there may be areas in the park that have limited or no service.

Each of our holiday homes are placed into a different banding based on its make and model, proximity to the beach, sea views, fixtures and fittings. Every year we closely examine each home and place them into either Bronze, Bronze Plus, Silver, Silver Plus, Gold, Gold Plus, Platinum or Diamond.

We also have three wheelchair-friendly accessible homes, two luxurious flagship homes and four beach houses. Many of our holiday homes also open directly onto a generous sundeck - the perfect place to relax, take in the stunning sea views and watch the world go by.

Heavenly holiday homes continued

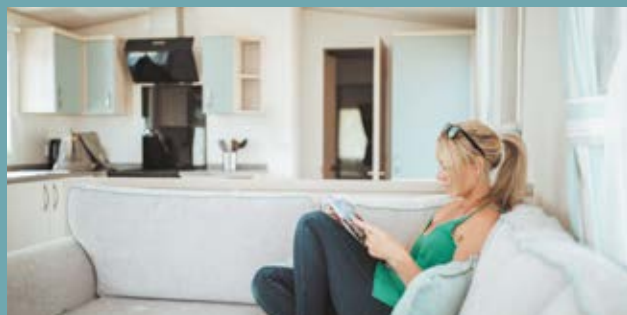
Beach Houses

Experience coastal living at its finest in our modern and stylish Beach Houses, located just a stone's throw away from the beach. Offering a fully equipped kitchen, living area with sofa bed, dining area that can convert into a double bedroom and a quirky mezzanine bedroom level, our Beach Houses are perfect for couples or families looking to relax and unwind right beside the sea. However, with only four Beach Houses on site, you need to be quick when booking! Our Beach Houses now come equipped with an electric vehicle charger for your convenience.



The Lookout

Perched high above the park on the ancient lime kiln, The Lookout is a luxurious three-bedroom holiday home, complete with its own spacious, private decked area, making it perfect for sitting outside in the sunshine and soaking up the stunning sea views. Suitable for up to eight people, this premium home includes a fully equipped kitchen, living and dining area, bathroom, double bedroom with an ensuite and two twin rooms. The Lookout is now equipped with an electric vehicle charger for your convenience.



The Retreat

If you're looking for a more peaceful and secluded getaway, then our beautiful four-bedroom lodge, The Retreat, makes for an unrivalled woodland escape. Nestled in our Woodland Willows area, although only a short walk to the beach, The Retreat can comfortably sleep up to eight people. There are two double bedrooms, two twin bedrooms, two bathrooms and parking for two cars included. The Retreat is perfect for larger groups or families looking for a holiday together. The Retreat is now equipped with an electric vehicle charger for your convenience.



The Retreat even has its own fenced private garden with a sun deck and BBQ.



Inclusivity for all

At Pentewan Sands Holiday Park, we're passionate about making all of our facilities as accessible as possible to as many people as we can. Our park is designed with inclusivity at the heart, and we've taken extra steps to make sure our accommodation and facilities work for everyone.

All three of our wheelchair-friendly holiday homes have two bedrooms, sleeping up to six people, and are equipped with wide door frames throughout, a large wet-room, full-height conventional kitchen, easy-access patio doors and 3ft divan beds, to make a perfect home from home for those guests requiring extra accessibility.

Open 22nd March – 2nd November 2024

		Bronze	Bronze +	Silver	Silver +	Gold	Gold +	Platinum E & W Field
2 Bedrooms (sleeps 4-6) Based on 4 people					W9	W6, W28	A34, A35, E14, E36, E25	E23
3 Bedrooms (sleeps 6-8) Based on 6 people		F83, F84, W20, W24	F76, F77, F78, F79	F74, F75, W25, E30	W7, W8, W10, W11, W12, W13, W14, W15, W16, W17, W18, W19, W35	W1, W2, W3, W4, W5, W21, W22, W23, W26, W27, W29, W31, W32, W33, W36, W37, E49, E50, E51, E52, E53	A27, A28, A29, A30, A31, A32, A33, E31, E34, E37, E38, E39, E40, E41, E42, E43, E44, E45, E46, E47, E48	E15, E16, E17, E18, E19, E20, E21, E22, E24, E26, E27, E28, W30, W34
Arriving	Departing							
Fri 22 Mar	Sat 30 Mar	£400	£440	£480	£520	£565	£615	£665
Easter Holidays								
Sat 30 Mar	Sat 13 Apr	£600	£625	£660	£695	£745	£800	£850
Sat 13 Apr	Sat 27 Apr	£400	£440	£480	£520	£565	£615	£665
Sat 27 Apr	Sat 4 May	£510	£535	£560	£585	£645	£705	£760
Riviera Run								
Sat 4 May	Sat 11 May	£565	£605	£640	£670	£725	£775	£830
Sat 11 May	Sat 25 May	£510	£535	£560	£585	£645	£705	£760
Half Term								
Sat 25 May	Sat 1 Jun	£800	£855	£915	£965	£1,080	£1,190	£1,305
Sat 1 Jun	Sat 15 Jun	£650	£710	£765	£825	£935	£985	£1,155
Sat 15 Jun	Sat 22 Jun	£695	£750	£810	£875	£970	£1,025	£1,215
Sat 22 Jun	Sat 29 Jun	£835	£880	£930	£970	£1,080	£1,115	£1,300
Sat 29 Jun	Sat 6 Jul	£895	£960	£1,030	£1,105	£1,220	£1,335	£1,465
Sat 6 Jul	Sat 13 Jul	£1,035	£1,105	£1,170	£1,245	£1,360	£1,480	£1,600
Sat 13 Jul	Sat 20 Jul	£1,085	£1,175	£1,280	£1,360	£1,485	£1,615	£1,750
Summer Holidays								
Sat 20 Jul	Sat 31 Aug	£1,235	£1,320	£1,395	£1,475	£1,615	£1,760	£1,905
Sat 31 Aug	Sat 14 Sep	£585	£610	£635	£665	£725	£780	£840
Sat 14 Sep	Sat 28 Sep	£445	£505	£560	£625	£660	£700	£730
Sat 28 Sep	Sat 26 Oct	£415	£460	£510	£550	£600	£640	£685
October Half Term								
Sat 26 Oct	Sat 2 Nov	£625	£660	£700	£730	£820	£910	£1,000

Holiday Home Extras Per Night		
Extra Person 3yrs+	Boat, Highchair, Travel Cot or Extra Car	Wheelchair/Ramp
£12.50	£6	£3.50/£10

T&Cs: From 25th May – 1st June and 20th July – 31st August 2024, holiday home bookings must be for multiples of one week. At all other times, short breaks are welcomed (excluding our Diamond holiday homes and Flagship homes, The Retreat and The Lookout). All our short breaks are subject to a minimum of three nights. The short-break tariff is inclusive of booking fees; cancellation scheme is available as an optional extra. If you would like any more information regarding our short breaks, please call our Reservations team on **01726 843 485**.

FRIDAY ARRIVALS

		Platinum A & D Field	Diamond	The Lookout	The Retreat	Beach House
2 Bedrooms (sleeps 4-6) Based on 4 people		D26 ♿, A14, A16 ♿				BH1, BH2, BH3 and BH4
3 Bedrooms (sleeps 6-8) Based on 6 people		A15, A17, A18, A19, A20, A21, A22, A23, A24, A25, A26, D27, D28, D30, D31, D32, D33	D1, D2, D3, D4, D5, D6, D7, D8, D9, D10, D11, D22, D24, D29, D34, D35	3 beds, sleeps 8	4 beds, sleeps 8	Beach Houses – 1 double bed and mezzanine level, sleeps up to 6
Arriving	Departing					
Fri 22 Mar	Fri 29 Mar	£665	£715	£835	£835	£665
Easter Holidays						
Fri 29 Mar	Fri 12 Apr	£850	£905	£1,045	£1,045	£850
Fri 12 Apr	Fri 26 Apr	£665	£715	£835	£835	£665
Fri 26 Apr	Fri 3 May	£760	£830	£940	£940	£760
Riviera Run						
Fri 3 May	Fri 10 May	£830	£880	£1,015	£1,015	£830
Fri 10 May	Fri 24 May	£760	£830	£940	£940	£760
Half Term						
Fri 24 May	Fri 31 May	£1,305	£1,420	£1,570	£1,570	£1,305
Fri 31 May	Fri 14 Jun	£1,155	£1,265	£1,420	£1,420	£1,155
Fri 14 Jun	Fri 21 Jun	£1,215	£1,330	£1,495	£1,495	£1,215
Fri 21 Jun	Fri 28 Jun	£1,300	£1,420	£1,570	£1,570	£1,300
Fri 28 Jun	Fri 5 Jul	£1,465	£1,570	£1,725	£1,725	£1,465
Fri 5 Jul	Fri 12 Jul	£1,600	£1,710	£1,875	£1,875	£1,600
Fri 12 Jul	Fri 19 Jul	£1,750	£1,880	£2,065	£2,065	£1,750
Summer Holidays						
Fri 19 Jul	Fri 30 Aug	£1,905	£2,050	£2,250	£2,250	£1,905
Fri 30 Aug	Fri 13 Sep	£840	£905	£1,045	£1,045	£840
Fri 13 Sep	Fri 27 Sep	£730	£770	£885	£885	£730
Fri 27 Sep	Fri 25 Oct	£685	£730	£805	£805	£685
October Half Term						
Fri 25 Oct	Fri 1 Nov	£1,000	£1,085	£1,245	£1,245	£1,000

All bookings for seven nights or more are subject to a £10.25 booking fee and a compulsory cancellation scheme of £3.15 per night. Please see our full T&Cs for more information. Please note: The prices in the tariff tables include VAT at prevailing rates. Prices based over a seven-night stay; where your chosen dates are split between bands, prices will be calculated accordingly. Please note that two-bedroom holiday homes include up to four guests, three-bedroom holiday homes include up to six guests, and the beach houses include up to four guests within the base price shown in the tariff sheet.

Open 22nd March – 2nd November 2024

		Bronze		Bronze +		Silver		Silver +		Gold		Gold+		Platinum & Beach House	
								W9		W6, W28		A34, A35, E14, E25 Ⓒ, E36		E23, D26 Ⓒ, A14, A16 Ⓒ	
2 Bedrooms (sleeps 4-6)															
3 Bedrooms (sleeps 6-8)		F83, F84, W20, W24		F76, F77, F78, F79		F74, F75, W25, E30		W7, W8, W10, W11, W12, W13, W14, W15, W16, W17, W18, W19, W35		W1, W2, W3, W4, W5, W21, W22, W23, W26, W27, W29, W31, W32, W33, W36, W37, E49, E50, E51, E52, E53		A27, A28, A29, A30, A31, A32, A33, E31, E34, E37, E38, E39, E40, E41, E42, E43, E44, E45, E46, E47, E48		E15, E16, E17, E18, E19, E20, E21, E22, E24, E26, E27, E28, W30, W34, A15, A17, A18, A19, A20, A21, A22, A23, A24, A25, A26, D27, D28, D30, D31, D32, D33	
Arriving	Departing	M, T, W, T	F, S, S	M, T, W, T	F, S, S	M, T, W, T	F, S, S	M, T, W, T	F, S, S	M, T, W, T	F, S, S	M, T, W, T	F, S, S	M, T, W, T	F, S, S
Per night price															
Fri 22 Mar	Fri 29 Mar	55	73	61	80	66	88	72	95	78	103	85	112	91	123
Easter Holidays															
Fri 29 Mar	Fri 12 Apr	83	109	86	115	91	121	96	127	102	137	110	147	117	156
Fri 12 Apr	Fri 26 Apr	55	73	61	80	66	88	72	95	78	103	85	112	91	123
Fri 26 Apr	Fri 3 May	70	94	74	98	77	103	80	108	89	118	97	129	105	139
Riviera Run															
Fri 3 May	Fri 10 May	78	103	83	111	88	117	92	123	100	133	107	142	114	152
Fri 10 May	Fri 24 May	70	94	74	98	77	103	80	108	89	118	97	129	105	139
Half term															
Fri 24 May	Fri 31 May	N/A	N/A	N/A	N/A	N/A	N/A	N/A	N/A	N/A	N/A	N/A	N/A	N/A	N/A
Fri 31 May	Fri 14 Jun	89	120	98	130	105	141	113	152	129	171	135	181	159	212
Fri 14 Jun	Fri 21 Jun	96	127	103	138	111	149	120	161	133	178	141	188	167	223
Fri 21 Jun	Fri 28 Jun	115	153	121	161	128	170	133	178	149	197	153	205	179	238
Fri 28 Jun	Fri 5 Jul	123	164	132	176	142	188	152	203	168	223	184	244	201	269
Fri 5 Jul	Fri 12 Jul	142	190	152	203	161	214	171	229	187	249	204	271	220	293
Fri 12 Jul	Fri 19 Jul	149	199	162	215	176	235	187	249	204	273	222	296	241	320
Peak Summer															
Fri 19 Jul	Fri 30 Aug	N/A	N/A	N/A	N/A	N/A	N/A	N/A	N/A	N/A	N/A	N/A	N/A	N/A	N/A
Fri 30 Aug	Fri 13 Sep	80	108	84	112	87	117	91	123	100	133	107	143	116	153
Fri 13 Sep	Fri 27 Sep	61	82	69	93	77	103	86	115	91	121	96	129	100	134
Fri 27 Sep	Fri 25 Oct	57	76	63	85	70	94	76	100	83	109	88	117	94	126
October Half Term															
Fri 25 Oct	Fri 1 Nov	86	115	91	121	96	129	100	134	113	150	125	167	138	183

For pricing of extras, please see page 14.



PITCH PERFECT

Not only do we have some of the most generous pitches in the Southwest, but we also offer exceptional facilities.

Our four luxury amenity blocks offer unlimited hot water, a selection of private bathrooms, dishwashing areas, a launderette and more. For 2024, a selection of our pitches now come equipped with electric vehicle chargers! Waste points are also conveniently located throughout the park. We're perfect for tents, touring caravans and motorhomes – plus you get to pick your ideal spot! Please use our park map to check pitch locations and pitch types.



Amenities include:

Spacious showers and wash basins

Family and accessible bathrooms

Dishwashing areas

Waste-disposal points

Fully equipped coin launderette

Water points at regular intervals

Calor Gas exchange

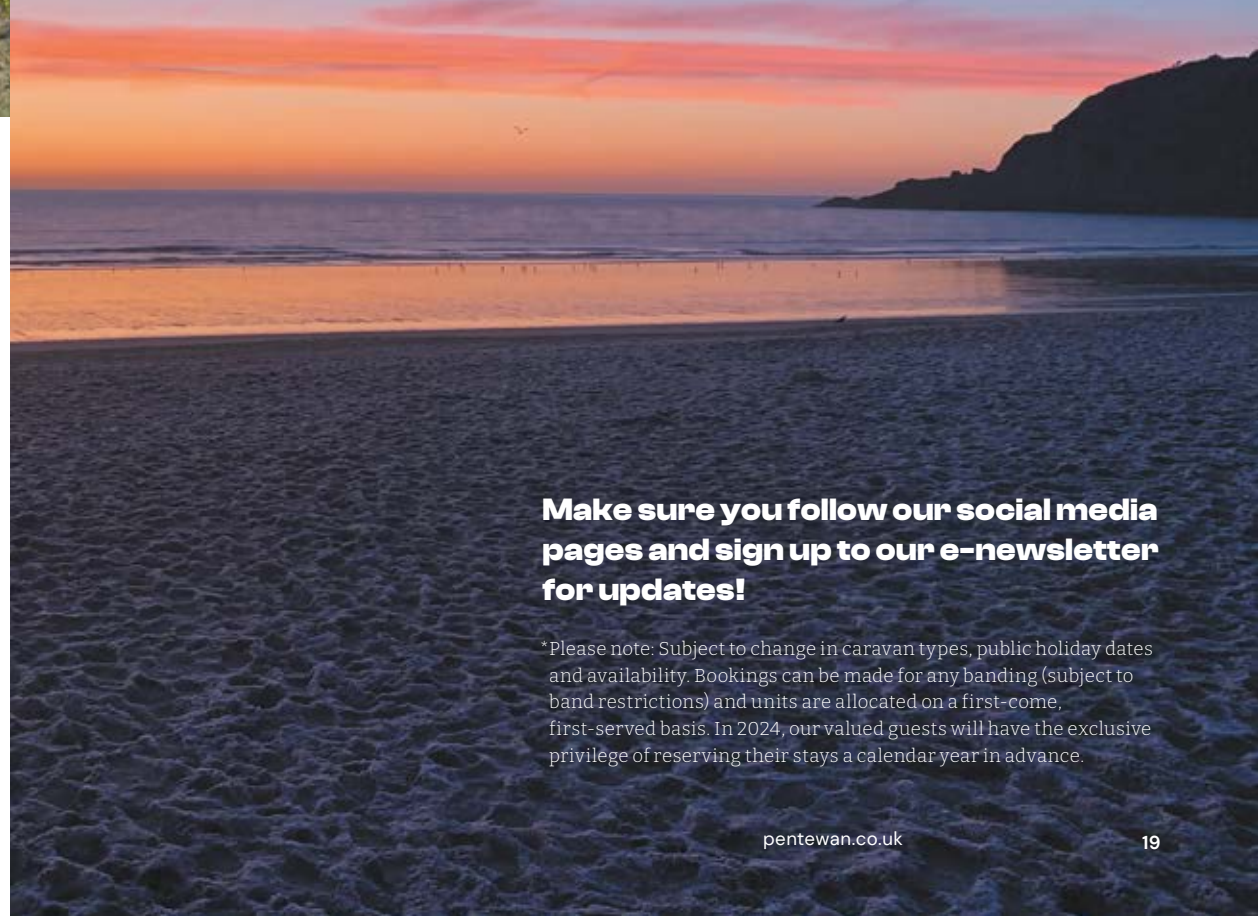
Optional extras

Wi-Fi on your pitch (free Wi-Fi is available in The Seahorse and the Hub Box). Every effort has been made to provide a full Wi-Fi service across the site; however, there may be areas in the park that have limited or no service.

REBOOK FOR 2025

If you loved your 2024 holiday, then why not book your 2025 break with us before you leave, for the best choice of accommodation and availability – with low deposits, it's the perfect time to book your 2025 holiday!

Book your camping and touring pitch for 2025 via our online ballot system. Opening in April 2024, please visit our website and complete the easy steps to enter the ballot. Requests will be processed during November 2024.



Make sure you follow our social media pages and sign up to our e-newsletter for updates!

*Please note: Subject to change in caravan types, public holiday dates and availability. Bookings can be made for any banding (subject to band restrictions) and units are allocated on a first-come, first-served basis. In 2024, our valued guests will have the exclusive privilege of reserving their stays a calendar year in advance.

Open 22nd March – 2nd November 2024

		Pitch prices based on two persons per night, plus tent, car/ touring caravan or car/ motorhome		Pitch Extras Per Night			Additional Extras Per Night		
Arriving	Departing	Non-Electric	Electric	Premium	Premium Plus	Beach Front	Adults per night	Child Per night 3-15 yrs	Boat or extra car or extra Tent
Fri 22 Mar	Fri 29 Mar	£13.15	£26.90	£2.70	CLOSED	CLOSED	£7.20	£3.80	£4.70
Easter Holidays									
Fri 29 Mar	Sat 13 Apr	£17.70	£34.70	£3.50	CLOSED	CLOSED	£7.20	£3.80	£4.70
Sat 13 Apr	Sat 27 Apr	£13.45	£27.20	£2.80	CLOSED	CLOSED	£7.20	£3.80	£4.70
Sat 27 Apr	Sat 4 May	£14.40	£30.30	£3.10	£6.10	£9.10	£7.20	£3.80	£4.70
Riviera Run									
Sat 4 May	Sat 11 May	£15.80	£32.10	£3.30	£6.50	£9.70	£7.20	£3.80	£4.70
Sat 11 May	Sat 25 May	£14.40	£30.30	£3.10	£6.10	£9.10	£7.20	£3.80	£4.70
Half term									
Sat 25 May	Sat 1 Jun	£24.30	£43.10	£4.40	£8.70	£13.00	£8.30	£5.00	£6.40
Sat 1 Jun	Sat 8 Jun	£14.40	£30.30	£3.10	£6.10	£9.10	£7.20	£3.80	£4.70
Sat 8 Jun	Sat 15 Jun	£15.50	£31.80	£3.20	£6.40	£9.60	£8.30	£5.00	£6.40
Sat 15 Jun	Sat 22 Jun	£20.10	£37.10	£3.80	£7.50	£11.20	£9.60	£6.10	£7.40
Sat 22 Jun	Sat 29 Jun	£24.40	£41.40	£4.20	£8.30	£12.50	£9.60	£6.10	£7.40
Sat 29 Jun	Sat 6 Jul	£25.40	£44.20	£4.50	£8.90	£13.30	£9.60	£6.10	£7.40
Sat 6 Jul	Sat 20 Jul	£30.30	£49.10	£5.00	£9.90	£14.80	£9.60	£6.10	£7.40
Peak Summer									
Sat 20 Jul	Sat 31 Aug	£41.40	£62.30	£6.30	£12.50	£18.70	£10.80	£7.00	£8.60
Sat 31 Aug	Sat 7 Sep	£17.70	£34.70	£3.50	£7.00	£10.50	£7.20	£3.80	£4.70
Sat 7 Sep	Sat 28 Sep	£13.00	£28.90	£2.90	£5.80	£8.70	£7.20	£3.80	£4.70
Sat 28 Sep	Sat 26 Oct	£12.55	£26.30	£2.70	CLOSED	CLOSED	£7.20	£3.80	£4.70
October Half Term									
Sat 26 Oct	Sat 2 Nov	£13.00	£28.90	£2.90	CLOSED	CLOSED	£7.20	£3.80	£4.70



Please note all bookings for seven nights or more are subject to a £10.25 booking fee and a compulsory cancellation fee of £1.60 per night. There is a maximum of six guests allowed per camping and touring pitch. Please see our full T&Cs for more information. VAT: The prices in the tariff include VAT at prevailing rates.

T&Cs: Beach-Front, Premium and Premium Plus pitches are bookable for seven night stays only, Saturday to Saturday*. Electric and non-electric pitches allow more flexible stays during off-peak but are still subject to a seven night minimum stay, Saturday to Saturday*, during peak dates from 25th May – 1st June and 20th July – 31st August. *Please note, in the W Field, stays are from Wednesday to Wednesday during peak dates.

Share your memories with us on social media for a chance to be featured next year!



@Cornish Drone Photography



@Simply Devon on Earth



@the.sunday.squad



@Cornish Drone Photography

We love seeing the moments that made your time at Pentewan Sands unforgettable! Share your memories with us on social media for a chance to be featured next year.

-  @pentewansands
-  @pentewansandsholidaypark

Camping and touring

Bargain Fortnights

Book any fortnight between 22nd March to 2nd November (excluding 25th May – 1st June and 20th July – 31st August) and enjoy 15% off the published price for the two weeks.*

*Please note: Premium, Premium Plus and Beach-Front pitches are excluded from this offer. Offer applies to the basic pitch fee only.



Holiday homes

Bargain Fortnights

Book any fortnight between 22nd March to 2nd November (excluding 25th May – 1st June and 20th July – 31st August) and enjoy 20% off the published price for the two weeks.*

Senior citizens

Senior citizens aged 65+ who book a stay of seven nights or more in one of our holiday homes can receive 5% off the published price all year round.*

Holidays for two

For bookings of one week for two people only, we offer a 10% discount on our holiday homes from 22nd March - 2nd November (excluding 25th May - 1st June and 20th July - 31st August).*

*Please note: Only one offer can be applied to any booking. Discounts apply to base price only. All offers exclude Diamond, Beach House and Flagship homes. Senior Citizen discount only applies if all members of the party are aged 65+. Please visit our website for more information.

PENTEWAN SANDS HOLIDAY PARK – TERMS & CONDITIONS 2024

Booking your holiday

- To make a booking, go online at www.pentewan.co.uk, or call us on **01726 843 485**. We accept payment via credit card, debit card and cheques. The booking is only confirmed once we have checked the details and sent a confirmation.
 - Balances must be paid in full **42 days** prior to the commencement of your holiday. We reserve the right to re-let your pitch or accommodation if your balance is not paid in full 42 days prior to the start of your holiday and the deposit paid will be non-refundable.
 - All bookings during summer half term (**Whitsun week 25th May – 1st June 2024**) and the summer holidays (**20th July – 31st August 2024**) for holiday homes and touring and camping pitches must be for the full week. For holiday homes, this is either Saturday to Saturday or Friday to Friday. For touring and camping, this is either Saturday to Saturday or Wednesday to Wednesday.
 - No refunds will be made for late arrivals or early departures or evictions.
 - Deposits are not refundable except in accordance with the terms of the cancellation scheme.
 - Provisional telephone bookings will be held for 48 hours only. If no deposit or payment is received within that time the booking will lapse.
 - The Company reserves the right to make a surcharge after accepting a booking, if increased costs or an error on our behalf when making your booking makes this necessary. The customer will be notified of any such surcharge at least 21 days prior to the commencement of the holiday (other than VAT changes which may apply without notice).
 - All bookings for touring pitches and holiday homes for seven nights or more are subject to a compulsory booking fee and cancellation fee. Please find out more information regarding camping and touring and holiday-home charges below.
- ### Amending your holiday
- We recognise that often circumstances mean a customer may need to change the dates and requirements for their holiday.
1. **We will allow one amendment free of charge.**
 2. We then reserve the right to make a charge of **£20 per amendment** thereafter.
 3. Extras or additions to a booking are accepted and do not incur an amendment fee. Extras cannot be refunded if removed.

4. If you want to change any part of your holiday arrangements after your holiday confirmation has been issued, you must notify our Reservations team over the phone by calling **01726 843 485** or by emailing info@pentewan.co.uk.

Cancelling a holiday

A booking is a contract, and we regret that no refunds will be given for deposits or balances in the event of a cancellation. This is unless you meet one of the Company's qualifying conditions as part of their compulsory Cancellation Scheme.

The Company provides a compulsory Cancellation Scheme for bookings of 7 nights or more for when it is necessary for a customer to cancel their holiday. The Cancellation Scheme is optional for all short breaks.

Cancellation Conditions

Qualifying Reasons for Cancellation

- Illness, death, injury or maternity complications of any member of your party (detailed by you at the time of booking), or;
- Your redundancy or that of your spouse (qualifying for payment under the Redundancy Payments legislation), or;
- Jury service by you or your spouse, or;
- Death or serious injury or illness of a close relative (parent, grandparent, child, grandchild, brother, sister or spouse of any of the above) or the death of a business partner of a member of the party.

Provided that these circumstances arose AFTER the date you made your booking and you can supply documentary supporting evidence of the circumstances and the date they occurred.

If you cancel for a qualifying reason:

The period covered is from the time of acceptance of the booking until 15.00 hrs on the date of commencement of the holiday.

- For bookings cancelled 42 days or more prior to your holiday start date, we will refund all your money, minus the Cancellation Policy.
- For bookings cancelled less than 42 days prior to your holiday start date, we will refund all of your money minus the Cancellation Policy and minus a £45.00 administration charge.

If you cancel for a non-qualifying reason:

- For bookings cancelled 42 days or more prior to your holiday start date, you will forfeit your deposit and Cancellation Policy, but we will refund all your other money paid.

PENTEWAN SANDS HOLIDAY PARK – TERMS & CONDITIONS 2024

- For bookings cancelled less than 42 days prior to your holiday start date, you will forfeit your deposit as well as all other monies paid.

You are also liable for any outstanding balance on your holiday.

How to cancel

If you wish to cancel your holiday you must notify us by email or in writing. The date of cancellation is the date we receive your email or letter.

Rules and Conditions

1. On-site Facilities

Whilst we endeavour to provide all the facilities as advertised in our brochure, we regret that we are unable to accept liability for the temporary withdrawal of any facility due to Health and Safety reasons, mechanical breakdown or any circumstances beyond our control.

Certain facilities may be restricted or unavailable outside peak periods. This particularly applies to The Seahorse bar and restaurant hours, shop opening times, Pentewan Plaice (fish and chip shop), HUBBOX, Hideaway Bar, the arcade and boat-launching service. Outside peak season (mid-July – end August), The Seahorse's Crow's Nest may, on occasions, be closed for private functions.

2. Vehicles

- The speed limit throughout the site is 10 mph. PLEASE BE AWARE OF CHILDREN. Vehicles may not be driven on the beach at any time, nor may they be driven across the site between the hours of midnight and 6am. On arrival each vehicle will be issued with the barrier code and a parking permit, which must be always displayed in the vehicle. This will allow the vehicle to pass freely through the entry/exit barriers until the paid-up day of departure.
- Stand-up motorised/electric scooters, Segways and hover boards are permitted on site. However, speed limits must be strictly observed.
- For safety reasons, Segway chariots and Hoverkarts are NOT permitted on site.
- We care about the environment and our guests at Pentewan Sands, and aim to cater for all your needs. A selection of holiday homes and pitches have an EV charging point installed. Please see our park map to find out where the EV charging points are located. The charging of electric vehicles is strictly prohibited except via dedicated electric vehicle charging points. Any use of electricity intended for your accommodation for charging electric vehicles will incur a fee of £35 and you may be asked to leave the park.

3. Boats

- Boats must be kept on the owner's pitch. Any boat, no matter what size, must have third-party insurance. Owners will be expected to give evidence of this along with their pitch confirmation.
- Boats with motors must be declared.
- All boats will be issued with a pass on arrival. This pass must be clearly displayed on the craft and any boat not displaying a valid pass will be subject to a surcharge of 50% in addition to the normal fee. Motorised crafts may only enter or leave the water by way of the red buoyed channel.
- Please note, jet skis are NOT permitted on any part of the site, beach or harbour area. No boats may enter the area between the beach and the row of red buoys as this is a SWIMMING ONLY area.
- A launching service is provided for boats between mid-May and mid-September. A charge is made for this service which can be booked in our Reception. Please note, this service is weather dependent and can only be booked on the day you wish to launch.
- Areas are set aside at each end of the beach for picking up and setting down water skiers.

4. Holiday Homes

Holiday home type: The tariff tables used in conjunction with the park map show the location of the different types of holiday home in the park.

Accessible holiday homes: We have three wheelchair-friendly holiday homes (A16, D26 and E25) which offer wide access, a full wet-room, portable helper-frame and wide single beds. Please note: our accessible holiday homes have standard-height kitchens.

Linen: Duvets, duvet covers, pillows, pillowcases and one sheet per bed are included. Fresh linen is supplied weekly. Cot bedding is not supplied for infants. Towels, bathmats and tea towels are not supplied.

Charges: All bookings for seven nights or more are subject to a £10.25 booking fee and a compulsory Cancellation Scheme of £3.15 per night.

Damage deposit: No damage deposit is required, however the company reserves the right to charge the customer within 72 hours of departure for any damaged or missing items. If deemed necessary, a minimum £60 cleaning charge (£150 for damage caused by smoking and up to £150 charge for damages to mattresses) may also be levied. Customers will be invoiced for any damaged or missing items which must be paid accordingly. Failure to pay will result in

legal action or the refusal of future bookings.

Late checkout fee: Please contact our Reception team on **01726 843 485** for further information.

Bookings: Provisional bookings: These will be held for up to 48 hours pending receipt of your completed booking and deposit. A deposit of £100 per week is required to secure your holiday home booking. If a deposit or payment is not received within that time, then your booking will lapse.

Arrival and departure: Guests are welcome to check in from 4pm on the day of arrival; however, this is subject to change. Guests are welcome to arrive onsite from 11am and use the facilities. During peak dates, we regret that we are unable to offer early check-ins as it can cause delays in the overall cleaning process. Holiday homes must be vacated by 10am, at the latest, on the day of departure. Charges will be incurred for a late check-out that has not had prior agreement by the park. Should you wish to arrange a late check-out, please contact Reception the day prior to departure to discuss (charges may apply).

Holiday home short breaks: During the periods of 25th May – 1st June 2024 and the 20th July – 31st August 2024, holiday-home bookings must be for multiples of one week, Saturday to Saturday, except for D Field and Platinum A Field holiday homes, Flagship homes and Beach Houses which are Friday to Friday. Beach houses are also available to book Monday to Monday. At all other times, short breaks are welcome in all our holiday homes, apart from Diamond and our Flagships, The Lookout and The Retreat. Short breaks are for a minimum of three nights.

A deposit of £100 for a short break is required at the time of booking to secure your holiday home. If the deposit is not received within 48 hours, then your booking will lapse. The short-break tariff is inclusive of booking fees. A Cancellation Scheme is available as an optional extra. This can be added online or by telephone on **01726 843 485**.

Extra persons: Tariff rates are shown based on occupation by four persons in two-bedroom homes and the Beach Houses and six persons in three-bedroom homes and The Retreat. Please see tariff sheet for charges. Infants under three years: no charge.

Cars/boats: Car parking is generally provided directly adjacent to each holiday home. The tariff rates shown allows for one vehicle FREE of charge per holiday-home booking. Please see tariff sheet for charges for an additional car/boat. Please note, there may not always be two spaces available for every holiday home, though

the extra car can be parked in The Seahorse car park, as an extra parking permit will be provided.

We regularly check pitches and passes and undeclared cars, persons or boats will be subject to an additional penalty charge of 50%. The charging of electric vehicles is strictly prohibited except via dedicated electric-vehicle charging points. Any use of electricity intended for your accommodation for charging electric vehicles will incur a fee of £35 and you may be asked to leave the park.

Tents/gazebos: Tents may not be pitched adjacent to holiday homes. If tents are required, a separate booking must be made for a regular tent pitch. Small gazebos are permitted to be pitched alongside a holiday home if they do not restrict the view of other guests.

Travel cots and highchairs: A limited number can be provided on request but must be booked in advance. Please see tariff sheet for charges.

Ramps and wheelchairs: A limited number can be provided on request but must be booked in advance. Ramps are not available on all holiday homes, please contact our Reception team to find out more information. Please also see tariff sheet for charges.

VAT: Tariffs shown include VAT at prevailing rates.

Electricity/gas: Included.

Holiday-home offers: BARGAIN FORTNIGHTS

Book any fortnight between 22nd March - 2nd November (excluding 25th May - 1st June and 20th July - 31st August) and enjoy 20% off the published price for two weeks.

HOLIDAYS FOR TWO

For bookings of one week for two people only, we offer a 10% discount on our holiday homes from 22nd March - 2nd November (excluding 25th May - 1st June and 20th July - 31st August).

SENIOR CITIZENS

Senior citizens, aged 65+ in receipt of a state pension, are eligible for a 5% discount all year round in our holiday homes. Please note: All members of the party must be aged 65 or over.

Please note: ONLY ONE DISCOUNT CAN BE APPLIED TO EACH BOOKING. All offers exclude Diamond, Beach Houses and Flagship homes. Discounts apply to the base price only and do not include extras.

5. Camping and touring

Pitch types: Our pitch types are based on the proximity to the beach. Our Beach Front and Premium Plus pitches are the closest to the beach.

PENTEWAN SANDS HOLIDAY PARK – TERMS & CONDITIONS 2024

We do not accept commercial/sign written vans onsite without prior agreement. Please contact Reception before making a booking. The company reserves the right to refuse entry to any vehicle deemed not appropriate.

Non-Electric, Electric and Premium pitches are also available – look at our park map to pick your perfect spot or contact our Reservations team on **01726 843 485** with your requirements.

Charges: The tariff applies to a car or caravan, a motorhome or a car with a trailer or ordinary tent and two persons. Please note all bookings for seven nights or more are subject to a £10.25 booking fee and a compulsory cancellation fee of £1.60 per night.

Late-checkout fee: Please contact our Reception team on **01726 843 485** for further information.

Bookings: Provisional bookings: These will be held for up to 48 hours pending receipt of your completed booking and deposit. Deposits are charged at 25% (or a min. of £50). If these are not received in the booking office within that time, your provisional booking will lapse.

Duration: During the period 25th May – 1st June 2024 and 20th July – 31st August 2024, bookings must be for full weeks only (Sat to Sat or Weds to Weds – please refer to the park map). At other times, short breaks are welcome, subject to availability – please contact us with your requirements. Premium, Premium Plus and Beach Front pitches are bookable ONLY for full weeks from Saturday to Saturday.

Arrival and departure: You may arrive onsite and occupy your pitch from 12pm. No pitching is allowed between 10pm and 9am. Pitches must be vacated strictly by 10.30am, at the latest, on the day of departure to permit maintenance. Charges will be incurred for a late checkout which has not had prior agreement by the Park. Should you wish to arrange a late checkout, please contact Reception the day prior to departure to discuss (Charges apply).

Pitches are clearly marked by painted boundary stones. Please pitch between the markers in the direction of the arrow, NOT with the jockey wheel on the marker.

Greywater must only be emptied in the Elsan disposal points provided and greywater hoses are NOT permitted to be connected to the drains via any sort of flexible drainpipe. There are chemical disposal points at each of the toilet blocks. Greywater must only be emptied in the Elsan disposal points and not in the road drains.

Extras: Extra tent: One additional pup-tent only (4.6sqm or less) is permitted on each pitch, for which

an additional charge is payable (see tariff). Subject to pitch space, ONE domed party tent per two pitches may be permitted at the same charge – please telephone or e-mail us with your requirements.

Extra car/boat: One extra car is allowed to be parked on the pitch. See tariff sheet for charges. Please note, some pitches may not be suitable for an extra car.

Extra persons: No more than a total of six persons per pitch. See tariff sheet for charges per adult/child. Children under three: No charge but included in the occupancy.

Awnings or small gazebo: FREE. Please note, no tents or awnings may be pitched on the surrounding grassed area of pitches.

Non-breathable ground sheets: For year-round customer enjoyment, non-breathable ground sheets are prohibited.

Electricity: 240v, 16amp to all standard pitches. Non-electric pitches are as shown on the site plan. Premium Plus and Beach Front pitches are also available – contact our Reservations team with your requirements. Tariffs shown include VAT at prevailing rates.

Electric vehicles: The charging of electric vehicles is strictly prohibited except via dedicated electric-vehicle charging points. Any use of electricity intended for your accommodation for charging electric vehicles will incur a fee of £35 and you may be asked to leave the park.

Camping and touring offers BARGAIN FORTNIGHTS

Book any fortnight between 22nd March - 2nd November (excluding 25th May - 1st June and 20th July - 31st August) and enjoy 15% off the published price for two weeks. Please note: Premium, Premium Plus and Beach Front pitches are excluded from this offer. Offer applies to the basic pitch fee only.

6. Dogs and other pets

We regret to inform you that dogs and other pets are NOT allowed anywhere on Pentewan Sands except guide and assistance dogs, which must always be wearing a lead or harness. Certification must be shown and presented on arrival. Failure to do so will result in you and your dog being asked to leave the park for the duration of your stay. Dog owners are recommended to try our sister site at Heligan Caravan and Camping where well-behaved pets are welcomed – **Tel 01726 842 714.**

7. Children and teenagers

Parents are responsible for the safety, welfare and conduct of their children, anywhere on Company property.

Children under 12 years of age may not use the swimming pool unless accompanied by a responsible adult. We operate a Challenge 25 policy and only sell alcohol to adults over 18. We reserve the right to request a valid form of nationally approved identification if in doubt. For the benefit of our guests, we reserve the right to confiscate any alcohol being consumed off pitches and outside holiday-home areas by anyone, including underage drinkers.

8. Declaration of extras

It is the responsibility of customers to declare at the time of arrival any extra members of the party, extra cars, boats, tents etc. not previously included on their booking form. This applies also to extra members joining the party during the period of the booking. Failure to disclose and/or any failure to make prompt payment of additional fees may result in the party being evicted without refund and future bookings by a member of that party may not be accepted. All undeclared extras will be subject to an additional premium charge of 50%.

9. Restrictions

The site is designed for family holidays and couples. We do not accept young, all-male or all-female groups. Parties of evenly mixed couples are accepted to a maximum of three couples (aged 21+).

The Company reserves the right to evict, without refund, any person or party who causes a nuisance or disturbance on Company property, or whose behaviour gives cause for justifiable complaint. The Company reserves the right to refuse to accept a booking for any individual or party without an explanation or reason. We expect all residents to show courtesy to other guests, by keeping noise and disturbance to an absolute minimum after 11.30pm. All guests must return to their pitches by 1am at the latest.

10. Wi-Fi

Whilst every effort has been made to provide a full Wi-Fi service across the site, there may be areas in the park that have limited or no service. We cannot be responsible for limited service or temporary withdrawal of the service due to adverse weather conditions or breakdown. Guests using the Wi-Fi service may use our free phone from Reception to contact the provider should they endure any issues with this service during their visit with us.

11. Fires

BBQs and fire pits are permitted on site providing that they are kept under control and are not placed on picnic tables, on grassed areas or on holiday-home balconies. The Company reserves the right to prohibit any fire pits or BBQs during prolonged periods of dry weather or droughts. Please note: hot disposable BBQs must not be disposed of in bins.

12. Drones

Drones are prohibited anywhere on the site. The Company reserves the right to use drones for commercial use.

13. Storage of caravans

Storage of caravans can be provided on an annual basis, space permitting and at the caravan owner's own risk. 48 hours' notice must be given when a caravan is required to be moved out of storage. Please note, your own insurance is required.

14. Marketing accuracy

Whilst every care is taken to ensure that the details on our website are correct at the time of being published, the images shown are for illustration purposes only and the details may be subject to alteration. The photography on our website is to be used as a guide. The 'Out and About' sections contain options for off-park entertainment. Please check with the operators for relevant opening times.

15. TV filming and photography

Due to the increasing popularity of Pentewan Sands Holiday Park, we receive requests from TV and other companies to film or photograph on our parks. We also undertake our own promotional filming and photography. Every effort is made to ensure filming does not intrude into or affect any holiday activity and that it is clear to guests that filming/ photography is taking place. We will not accept responsibility if, contrary to your wishes, you appear on film or in photographs and we are unable to make any financial award or payment of any kind.

16. Maximum length of stay

Please note, 28 days is the maximum length of stay, excluding the Beach Front and Premium Plus pitches, which have a maximum length of stay of 21 days. Following a stay of 28 days you cannot stay at our park again until at least a further 28 days have elapsed since your most recent departure.

17. Further Information

Whilst every effort has been made to ensure the prices, specifications and facilities in the brochure and on the website are correct, the Company reserves the right to change them without notice.

PARK MAP

Pick your perfect location

We're all about making our customers' lives easier, from booking right through to arrival and departure. Visit www.pentewan.co.uk to book online or ring our Reservations team direct on 01726 843 485 – make sure you have the park map handy so you can pick the accommodation that suits you best! You can manage your bookings and payments via our guest portal. All you need is your booking confirmation number or the email address listed under your booking to sign in.

2-Bed Holiday Homes. Sleeps 6

- Bronze
- Bronze Plus
- Silver
- Silver Plus
- Gold
- Gold Plus
- Platinum
- Diamond
- Beach House
- Outside Sundeck

3-Bed Holiday Homes. Sleeps 8

- Bronze
- Bronze Plus
- Silver
- Silver Plus
- Gold
- Gold Plus
- Platinum
- Diamond
- Flagship 4 Bed
- Flagship 3 Bed



Pitches

- Non-Electric
- Electric
- Premium
- Premium Plus*
- Beach Front*
- Bikers and Walkers Pitch (non-reservable)

Facilities

- Wheelchair-Friendly Holiday Home
- e Elsan Points
- i Information Points
- m Motorhome Point
- ✗ No Access for Cars
- c Non-Reservable
- p Private
- Beach Access
- ⚡ Electric-Vehicle Charging

Please note: W Field pitches are bookable Wed–Wed only during peak season. *Premium Plus and Beach Front pitches available 27th April – Sat 28th September.



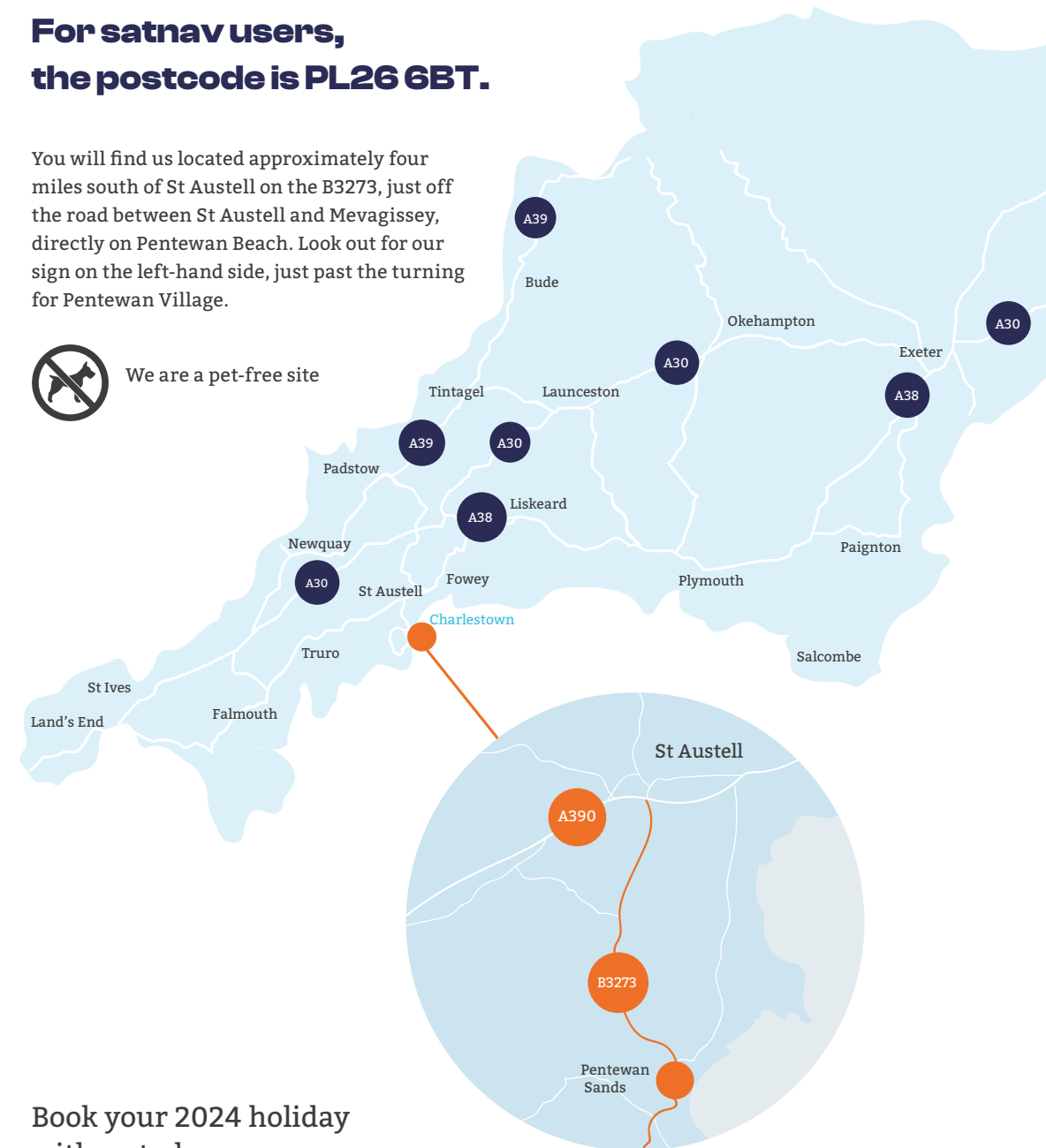
HOW TO FIND US

**For satnav users,
the postcode is PL26 6BT.**

You will find us located approximately four miles south of St Austell on the B3273, just off the road between St Austell and Mevagissey, directly on Pentewan Beach. Look out for our sign on the left-hand side, just past the turning for Pentewan Village.



We are a pet-free site



Book your 2024 holiday
with us today

pentewan.co.uk
email info@pentewan.co.uk
or call 01726 843 485



pentewan.co.uk

Book your 2024 holiday with us today

Book online:
www.pentewan.co.uk

email info@pentewan.co.uk
or call 01726 843 485

Pentewan Sands,
St Austell, Cornwall PL26 6BT

