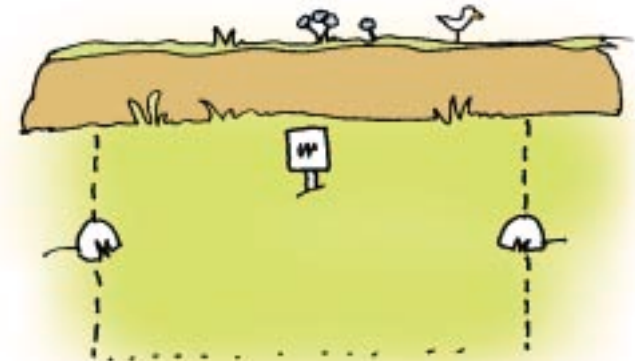


welcome,

your Pitch/Pod number is

in this field

Pitching Up. Please ensure you pitch between the stone markers as shown below. Moving can be very inconvenient after you have set up.



Terms and conditions

Deposits are non-refundable.

No refunds given. (Sorry but bad weather and faulty equipment is not our fault.)

Notification of late or early arrivals, i.e. before 8:30 a.m. and after 8:00 p.m. must be given.

The proprietors reserve the right not to allow entry onto the site of any person or persons.

Please make minimal noise in both late evenings and early mornings.

Use care whilst using barbecues, do not burn the grass or hedges, use the bricks provided for disposable BBQ's.

No open fires.

Keep to the 5mph speed limit at all times (remember there are children playing).

Parents are responsible for their childrens' behaviour and must accompany them to the toilets at all times.

Site to be vacated by 10:30 a.m. on day of departure, unless a prior arrangement has been made.

Friendly dogs on leads and pets are most welcome.

All pet fouling must be cleaned up and placed in bins provided.

Any owners of pets becoming a nuisance will be asked to leave the site.

We cannot accept any responsibility for any personal injury, loss or damage to any property including vehicles.

Any guest or visitor must check-in at reception.

Anyone failing to comply with the above conditions may be asked to leave the site.



FOR WIFI PLEASE GO TO
RECEPTION FOR A PRE-PAID CARD

Useful Phone Numbers & Locations.

Doctors	Emergencies	01872 572255
	Appointments	01872 573459
Dentist		01872 354375
Vet		01872 223400
Hospital A+E Treリスケ, Truro		01872 250000
Newquay Minor Injuries		01637 893600
Atlantic Taxis		01872 572126
Perran Taxis		07530171742
Albatross Cars		07555 663722
Riley Garage		01872 572575
Cox's Garage		01872 572843
First Busses		0845 600 1420

Cash Points in Perranporth at Lloyds and CoOperative.

Farm Kitchen.

Microwaves, sink, fridges, vending machines, hot and cold drinks and a toaster.

Please use our recycling facilities and PLEASE put all disposable BBQ's on the bricks provided.

Laundry facilities are in the shower block in Willow field.

Herb Garden - you're welcome to use our herb garden, next to the Campers Kitchen.

Animal Corner - feel free visit our animals and please check at reception for the feeding times.

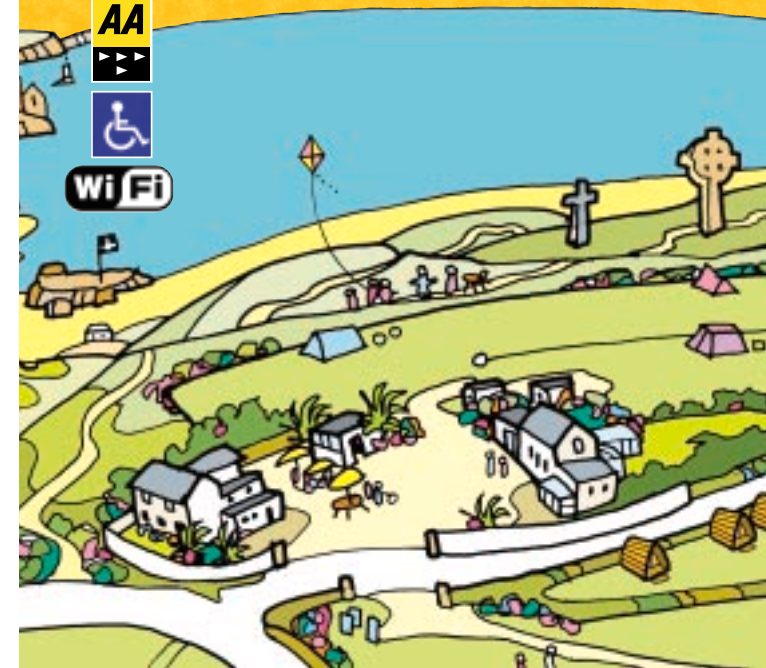
TOLLGATE FARM
CARAVAN AND CAMPING PARK
BUDNICK HILL PERRANPORTH CORNWALL TR6 0AD
01872 572130
enquiries@tollgatefarm.co.uk
www.tollgatefarm.co.uk

welcome



A quick guide to help you

Local map of some of our
favourite walks
In no particular order



Local map of some of our favourite walks

Please note all walks will include hills (You are in Cornwall!) All are dog friendly. There are dog washing/drying facilities in the main carpark at Perranporth.

SUNSET AND COASTAL PATH WALK ●●●●●

once onto the headland great place picnic and to watch the sunset and magnificent views. Pick up the coastal path here. See if you can find the plaques in the ground by the boundary markers for old favourite four legged friends. Not pushchair friendly. This should take about 20 mins. Easy.

LOST CHURCH AND ORATORY ●●●●●

Discover the foundations of the Lost Church and the recently unearthed Saxon church that was swallowed up by the sand. Look for the tall Celtic cross for the church. This should take about 45 mins. Easy.

HAVEN BEACH END ●●●●●

Easiest route for pushchairs as all farmland. Please note steep ramps at the end to get on to the beach. This area of the beach is life guarded and there is a small café down there too, opening times dependent on season and there is no toilet down on the beach. Also a good route to take to access the far end of the beach just turn right once on the beach and walk... hardly anyone goes this far. Take a picnic. This should take about 20 mins. Easy.

PERRANPORTH TOWN AND BEACH ●●●●●

This is the way to get to Perranporth itself and the beach with all its amenities. Fully lifeguarded, surfers and bodyboarders paradise. If the tide is out turn left once you are past Chapel rock for great caves and rock pools. CAUTION check tide times as it comes in quickly. If you walk down why not hop on the Newquay bus to come back up or grab a taxi. Fine with a pushchair grass and sandy tracks little off road in places. This should take about 15/20 mins. Easy.



General walks with or without Dogs.

There are miles of walks just between us and the sea, just go to the gate, pick a path and go!

THE GREAT DUNES

The tallest Dunes are on the left near to Haven, there are access points all around, they are great to climb and of course run down. Look for the large cross, this is the high Point - fab views from here. Duration Unlimited - don't get lost. Easy. Fine with pushchairs on main paths.

DEADMANS POOL

A Fresh water spring has created a large pond under some cliffs at the very far end of Beach. Very quiet because not many people walk this far - We love going with a picnic.

This is a long walk but we love the feeling of space and open sea and sky's especially when the tide is not high this is great when the rest of the beach is busy during school holidays. You can start the walk from the Perranporth end of the beach or the Haven walk as described earlier.

This should take about 2 hours or so. Hard going in places. make sure you take water with you. No pushchairs.

GOLF CLUB WALK

This is another way of getting to the beach and the watering hole pub. Follow the white stones and then the footpath signs. Look out for golfers and take a torch after dark! This should take about 25 mins. Moderate. No pushchairs.

BUSSES

The request stop for Newquay is on the main road. The request stop for Truro is in Haven's entrance.

We hope you have a great stay with us and if you have any questions about trips out or anything else please just ask.

(N) Bus stop for Newquay

(T) Request Bus stop for Perranporth, St Agnes, Truro